

TECHNICAL DATA SHEET

LU4AL IP20 / Aga-Led® Type A

VERSION - 13.11.0215

STANDARD LUMINAIRE

Reference	LU4AL
Protection Class	IP20
Lighting Source	Aga-Led® Type A
Connector	Rigid Loop on B'Light conductor 16mm ²
Dimensions	24 x 28mm
Standard Length	330 - 670 - 1000 - 1330 - 1670 - 2000mm
Length on measure	on request up to 3000mm
Nb Lighting Unit	18 LED/m
Voltage	24V
Power	18 W/m
Connecting Cable	1m standard cable 2x1.5mm ²

FINISH

Color Finishing Profil

Standard	Natural Anodised Aluminium
On request	Thermo-Enameling Powder Coating RAL Color Anodising Polished Aluminium Chrome Aspect Polished Aluminium Gold Aspect

ON REQUEST

Fixation	FCU (Width: +4mm)
End Caps	EU4
Connecting Plug	AMS / AF
Dimming Option	1-10V, Dali, KNX <i>Ask technical departement for more information</i>

LIGHTING SOURCE

Lighting Source	Aga-Led® Type A
Ref	A10
Voltage	24V
Power	1W
Beam Angle	15°
CRI	80
Lifetime	60'000h
Working T°	-30°C ~ +55°C
Option	AGC: Anti Glare Optic



Color Temperature & Luminous Flux / Unit

CCT	2800K	4000K
Luminous Flux/Unit	40 lm	45 lm

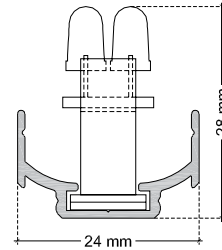
CERTIFICAT



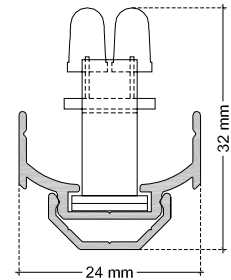
APPLICATION: Cornices, Windows, Balustrades



LU4AL / AGA-LED® TYPE A - Rigid Loop



ON REQUEST: LU4AL Fixation FCU



ON REQUEST: LU4AL End Caps EU4



ON REQUEST : Connecting plug AF/AMS

